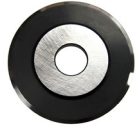


Type: Dusenbery® Style Blade

Part Number	Dimensions	Materials/Coatings	Packaged
470-040003	4.000" x .748" x .125"	52100**	Each



Type: Dusenbery® Style Blade

Part Number	Dimensions	Materials/Coatings	Packaged
470-030004	3.030" x .748" x .244"	52100**	Each



Type: Dusenbery® Style Blade

Part Number	Dimensions	Materials/Coatings	Packaged
470-041601	4.158" x 3.192" x .049"	52100**	Each



Type: Goebel® Style Blade

Part Number	Dimensions	Materials/Coatings	Packaged
470-0393001	3.937" x 2.757" x .049"	52100**	Each



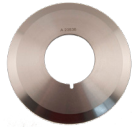
Type: Tidland® Style Blade

Part Number	Dimensions	Materials/Coatings	Packaged
470-03523048	3.543" x 2.362" x .047"	D2**	Each



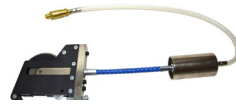
Type: Tidland® Style Blade

Part Number	Dimensions	Materials/Coatings	Packaged
470-05900002	5.906" x 3.152" x .219"	D2**	Each



Type: Tidland® Style Blade

Part Number	Dimensions	Materials/Coatings	Packaged
470-07874002	7.874" x 3.150" x .158"	D2**	Each



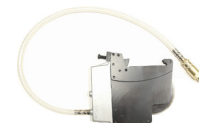
Type: Dusenbery® or Cameron® Style Pneumatic Holder

Part Number	Description	Packaged
476-654803	½" wide score cut knife holder with blade	Each



Type: Dusenbery® Style Pneumatic Holder

Part Number	Description	Packaged
476-654927	1" wide score cut knife holder with blade	Each



Type: Dusenbery® Style Pneumatic Holder

Part Number	Description	Packaged
476-300020	½" wide score cut knife holder without blade	Each

American Cutting Edge is the nation's leading supplier of slitting and converting blades. With over 50 years of experience, we can help you find the best blades for your cutting applications. Our capability to supply standard or custom knives is a cut above the rest!

Our stock ranging from razor, shear, score, and core cutting applications gives us the ability to be your premier supplier. We also have the capability to sharpen your carbide blades, shear knives, and score cutting blades. Let us help you keep your production running smoothly!



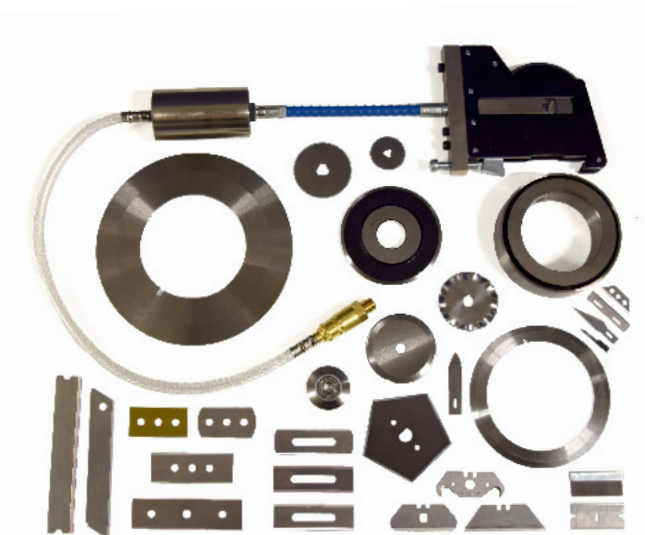
A division of CB Manufacturing

**American Cutting Edge**  
 4475 Infirmary Road  
 Miamisburg, OH 45342  
 888-252-3372



**AMERICAN CUTTING EDGE**  
 Industrial Blades & Knives

A division of CB Manufacturing



**Slitting, Rewinding,  
 and Core Cutting**

**Phone: 888-252-3372**

**www.AmericanCuttingEdge.com**



Type: Square End Slotted Blade

Part Number	Dimensions	Materials/Coatings	Packaged
SL-022501	2.250" x .750" x .015"	Carbon	500 per box
SL-022501X	2.250" x .750" x .015"	Carbon/Ceramic	Each
RW-3	2.250" x .750" x .015"	Tungsten Carbide**	5 per sleeve
CX-3	2.250" x .750" x .015"	Zirconia Ceramic**	5 per sleeve



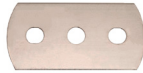
Type: Round End Slotted Blade

Part Number	Dimensions	Materials/Coatings	Packaged
SL-022505	2.250" x .750" x .015"	Stainless	500 per box
SL-022505TC	2.250" x .750" x .015"	Stainless/Titanium Carbide	Each



Type: Square End 3 Hole Slitter

Part Number	Dimensions	Materials/Coatings	Packaged
43.15GC	1.690" x .874" x .006"	Carbon	250 per box
43.20GC	1.690" x .874" x .008"	Carbon	200 per box
RW-5 .008	1.690" x .874" x .008"	Tungsten Carbide**	5 per sleeve
CX-5 .008	1.690" x .874" x .008"	Zirconia Ceramic**	5 per sleeve



Type: Round End 3 Hole Slitter

Part Number	Dimensions	Materials/Coatings	Packaged
43.10RSX	1.690" x .874" x .004"	Carbon	250 per box
43.15RS	1.690" x .874" x .006"	Stainless Steel	250 per box
43.30RS	1.690" x .874" x .012"	Stainless Steel	100 per box



Type: Injector Blade

Part Number	Dimensions	Materials/Coatings	Packaged
I-015002	1.500" x .310" x .010"	Stainless Steel	100 per box
I-015001X	1.500" x .310" x .010"	Stainless/Ceramic	Each



Type: Injector Blade

Part Number	Dimensions	Materials/Coatings	Packaged
RW-4	1.500" x .310" x .010"	Tungsten Carbide**	10 per sleeve
CX-4	1.500" x .310" x .010"	Zirconia Ceramic**	10 per sleeve



Type: 2 Notch, No Hole Utility Blade

Part Number	Dimensions	Materials/Coatings	Packaged
T-024001	2.400" x .740" x .025"	Carbon	5 per wrap 100 per box
T-024001X	2.400" x .740" x .025"	Carbon/Ceramic	Each
TC024101	2.400" x .740" x .025"	Carbide**	Each



Type: Single Edge Blade

Part Number	Dimensions	Materials/Coatings	Packaged
SE-015001	1.500" x .750" x .009" With Back	Carbon	100 per sleeve



Type: Single Edge Blade

Part Number	Dimensions	Materials/Coatings	Packaged
RW-1 .009/.012	1.500" x .690" x .009" With Back	Tungsten Carbide**	5 per sleeve



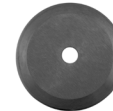
Type: Single Edge Blade

Part Number	Dimensions	Materials/Coatings	Packaged
RW-2	1.500" x .687" x .009" No Back	Tungsten Carbide**	5 per sleeve



Type: Heavy Duty, Safety Corner Utility Blade

Part Number	Dimensions	Materials/Coatings	Packaged
T-024012	1.899" x .744" x .036"	Stainless Steel	50 per box



Type: Appleton® Style Blade

Part Number	Dimensions	Materials/Coatings	Packaged
470-020001	2.000" x .312" x .062"	M2**	Each



Type: Appleton® Style Blade

Part Number	Dimensions	Materials/Coatings	Packaged
470-025312062	2.500" x .313" x .062"	M2**	Each



Type: Appleton® Style Blade

Part Number	Dimensions	Materials/Coatings	Packaged
470-03312062	3.000" x .3125" x .062"	M2**	Each



Type: Appleton® Style Blade

Part Number	Dimensions	Materials/Coatings	Packaged
470-03000002	3.070" x .3125" x .062"	M2**	Each



Type: Arpeco® Style Blade

Part Number	Dimensions	Materials/Coatings	Packaged
470-0256001	2.563" x 1.622" x .125"	52100**	Each



Type: Arpeco® Style Blade

Part Number	Dimensions	Materials/Coatings	Packaged
470-0256002	2.565" x 1.522" x .120"	M2**	Each



Type: Arpeco® Style Blade

Part Number	Dimensions	Materials/Coatings	Packaged
470-0256100	2.533" x 1.575" x .037"	52100**	Each



Type: Arrow® Style Blade

Part Number	Dimensions	Materials/Coatings	Packaged
470-041329047	4.134" x 2.953" x .047"	D2**	Each



Type: Cameron® Style Blade

Part Number	Dimensions	Materials/Coatings	Packaged
470-030003	3.030" X .866" X .244"	52100**	Each



Type: Coretech® Style Blade

Part Number	Dimensions	Materials/Coatings	Packaged
470-030000500	3.030" x .501" x .250"	52100**	Each



Type: Coretech® Style Blade

Part Number	Dimensions	Materials/Coatings	Packaged
470-04000005	4.000" x .500" x .250"	52100**	Each

\*\*Resharpener services available for these blades.